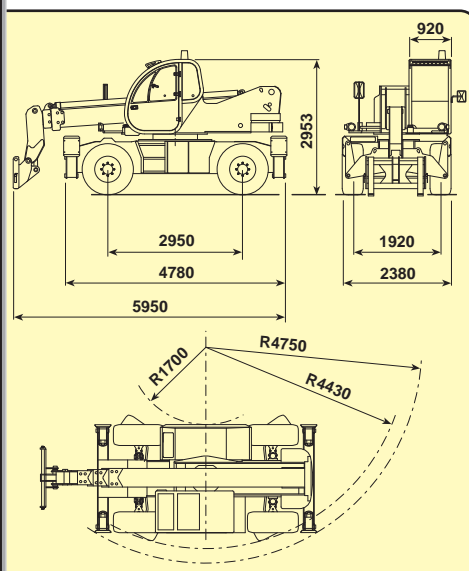
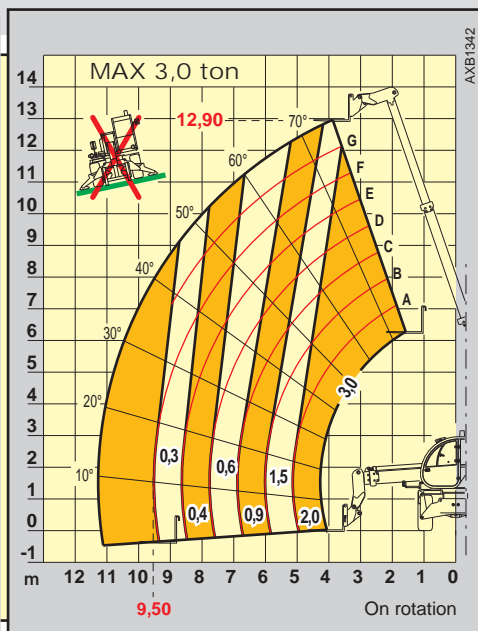
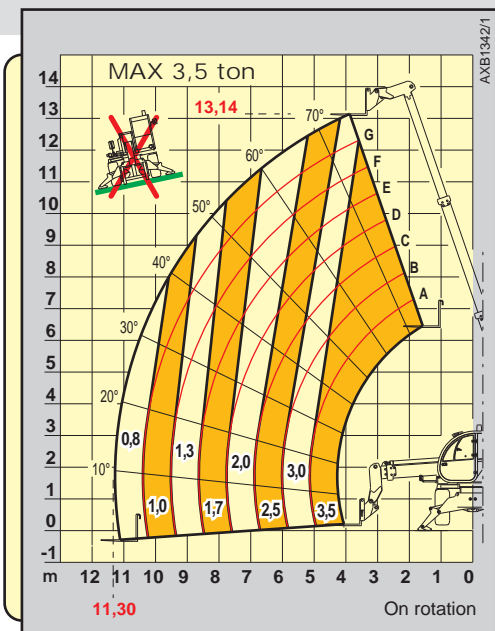


PEGASUS 35.13



d DIECI
macchine edili ed agricole
s.p.a.

PEGASUS 35.13



PERFORMANCES

Maximum capacity:	3.500 kg
Capacity at maximum height on stabilizers:	3.000 kg
Capacity at maximum height on tyres:	1.500 kg
Maximum capacity boom on stabilizers:	800 kg
Maximum capacity boom on tyres:	300 kg
Maximum lifting height on stabilizers:	13,14 m
Maximum lifting height on tyres:	12,90 m
Maximum horizontal boom extension:	11,30 m
Boom at maximum height:	3,90 m
Angle of fork arching:	134°
Tearing force:	5.700 daN
Towing force:	7.300 daN
Maximum slope for overtaking:	40 %
Total empty weight:	13.440 kg
Max speed:	40 km/h



TRANSMISSION

Transmission:..... Hydrostatic with variable capacity pump
 Hydraulic engine:..... with automatic change
 Gear reversing:..... Electro - hydraulic
 Inching pedal for controlled forward movement
 2 speed power steering.



HYDRAULIC CIRCUIT

Gear pump with capacity at speed:..... 135 lt/1'
 Max working pressure:..... 230 bar
 Distributor controls with joystick:..... 5 in 1 proportional



DIFFERENTIAL AXLES

Steering axles:..... 2, with epicycloidal reduction gears
 Type of steering:..... 4 wheels / transversal / 2 wheels
 Front axle:..... levelling
 Rear axle:..... oscillating (possibility to block it)
 Service brake:..... oil bath on 4 wheels double hydraulic circuit, parking brake
 Negative parking brake.



ENGINE

DEUTZ BF4M2012C - TA - 103 kW
 Maximum power:..... 103 kW (141 cv) a 2500 rpm
 Operating principle:..... four-stroke engine, diesel
 Cylinders number and layout:..... 4, vertical in line
 Displacement:..... 4038 cm³ -Turbo compressor aftercooler
 Cooling system:..... liquid



REFUELLING (litre)

Hydraulic circuit:..... 245
 Fuel tank:..... 126



STANDARD DEVICES

Hydraulic movements with Danfoss proportional distributor.
 Anti-tipping device with block for hazardous movements.
 Continuous turret rotation over 360°.
 Oscillation block on rear axle.
 Hydraulic socket for possible accessories on boom head.
 Closed soundproof homologated cab FOPS, with heating.
 Stabilizers.



TYRES

Tyres:..... 19,5"



OPTIONAL AND ACCESSORIES

Optional and Accessories:..... see the relevant catalogue.

The information contained in the present publication are only intended as an indication; the models described may be modified, without notice, by the manufacturer, drawings and photographs may refer to optional equipment or to particular specifications for other countries. For any further information, please contact DIECI headquarters at the address given below. (Cod. SKT AXE3058: SCHEDA TECNICA - PEGASUS 35.13 - INGLESE 06/2004 v1)